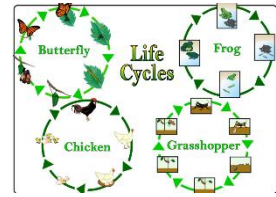


Summer 2 Curriculum matters

Our theme this half term is called '**Which came first, the chicken or the egg?**' which is primarily **science** based. It focuses on life cycles of plants and animals including humans.



Children's studies will include:

- How plants and animals reproduce (asexual and sexual reproduction).
- How humans change as they age (including puberty).
- Animals and their life cycles (including humans, amphibians, birds and insects)



English

This half term we will use the text 'Leon and the place between' to complete a narrative unit of work. Pupils will write explore vocabulary and sentence structure: focusing on practising their evaluating, editing and improving skills, before writing their own fantasy stories from the point of view of a different character. Children will also use their research of plant and animal life cycles to write their own explanations based on our science theme.

Reading

Children will participate in weekly whole class guided reading sessions.

Home English target

Whilst reading at home, making notes on more complex vocabulary to discuss in class and add to lists of ambitious vocabulary on our English working walls.

Maths

This half term we are focusing on:

Properties of shape

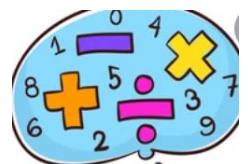
- Drawing lines and angles accurately
- Calculating angles on a straight line, around a point and in shapes
- Identifying regular and irregular polygons

Position and direction

- Position in the first quadrant
- Translation with coordinates
- Reflection with coordinates

Converting units

- Kilograms and kilometres
- Millimetres and millilitres



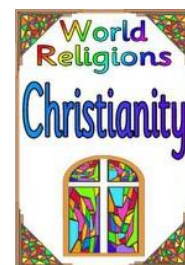
- Metric units
- Imperial units
- Converting units of time
- Time tables

Home Maths target

- Practising telling the time, adding on and taking away time, estimating time and reading a variety of timetables.

Religious Education

Our R.E. topic this term is Christianity. Children will learn about the beliefs of Christians and the effect of these upon their daily lives. We will also learn about the significance of signs and symbols to Christians.



Jigsaw-PSHE

Children will focus on the 'Changing me' unit of our **Jigsaw** scheme, including how boys and girls change during puberty and how changes may be at different times to their friends. They will summarise the process of conception. Children will examine why it is important to look after themselves emotionally and physically.



Computing

Children will continue to carry out complex searches, to support their independent research on plants and animals. They will begin to understand how to analyse and represent data. They will also have a focus on Radio stations. The children will learn how to record and play their own sounds.



Art

We will produce observational drawings of flowers in different media and use these drawings to make repeated card prints.

Physical Education

This half term the sports coaches will be teaching new team games.

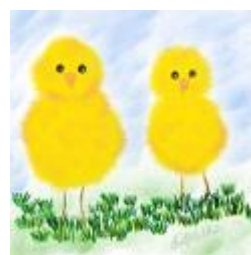
Music

In year 5, the children will participate in a weekly music session with music specialist Ms. Stone.



VISITORS TO SCHOOL

As part of our Life Cycles topic, in both Year 5 classes, we are hoping to take part in a week's programme of incubated eggs. This will be a lovely opportunity for the children to study lifecycles first hand. We will also have caterpillar gardens where we will observe their metamorphosis into butterflies.



Homework

Maths homework will be set every Friday and is to be returned to school by the following Tuesday.

English homework, directly connected to the **Spag lesson**, will be set on **Tuesday**, to be returned the following Friday.

Spellings will be sent home on Wednesday with a spelling test each Wednesday. There will also be a weekly times table challenge every Wednesday.