

# RSE Parent Consultation March 2020

This power point has been amended from the original one  
due to Jigsaw copyright



# We will inform you of the following:

- **The school's legal obligations on Relationships and Sex Education** (now and from 2020)
- **Your rights as a parent/carer**
- **How, what, why and when we intend to teach children**

# Children learn about sex from many different sources...

- The internet
- Television
- Social media
- Other media
- Friends
- Family
- School



Sometimes they end up with mixed, and sometimes inaccurate, information.

# Safeguarding children from...

- online grooming
- Child abuse (it's crucial that children know the correct names for body parts as it may prevent a prosecution)
- Unknowingly clicking on inappropriate material online (clickbait)

# Relationships



**Today's children and young people are growing up in an increasingly complex world and living their lives seamlessly on and offline....children and young people need to know how to be safe and healthy, and how to manage their academic, personal and social lives in a positive way'**

**DfE Guidance on Relationships Education, Sex Education and Health Education 2019**

It is crucial that our pupils know and understand how to:

- **How to have positive, healthy, caring and safe relationships**
- **How to seek help if a relationship is unhealthy**
- **How to make and sustain positive relationships**

# What does the Government say about Relationship Education

In 2018 the government passed an amendment to the Children and Social Work Bill to make RSE and Health Education statutory from Sept 2020.

The DfE Guidance 2019 (p.23) recommends that all primary schools 'have a sex education programme tailored to the age and the physical and emotional maturity of the pupils

**PRIMARY**

**RELATIONSHIPS EDUCATION IS COMPUSLORY**

**HEALTH EDUCATION IS COMPULSORY**

**Sex Education is at school's discretion**

*The DfE 2000 guidance 'recommends' that all school have a Sex and Relationships Education Programme (p9) that ensures 'boys and girls know about puberty and how a baby is born*



## **SECONDARY**

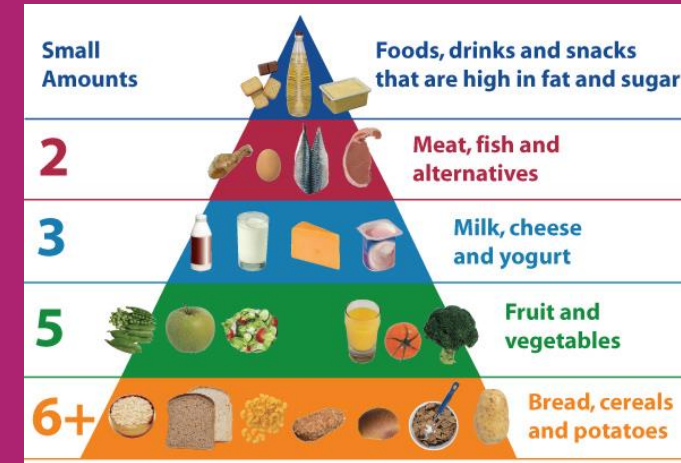
- **RELATIONSHIPS EDUCATION IS COMPULSORY**
- **SEX EDUCATION IS COMPULSORY**
- **HEALTH EDUCATION IS COMPULSORY**

**Guidance does not apply to: Sixth Forms colleges, 16-19 academies or FE colleges**

# Relationships Education – what is covered?

- **Families and people who care for me**
- **Caring friendships**
- **Respectful relationships**
- **Online relationships**
- **Being safe**

# Health Education



# Health Education – what is covered?

- Mental wellbeing
- Internet safety and harms
- Physical health and fitness
- Healthy eating
- Drugs, alcohol and tobacco

- Health and prevention
- Basic First Aid

Changing adolescent body\*

\*statutory in Health Education



# Statutory Science Primary Curriculum



<b>Key Stage</b>	<b>Pupils must be taught:</b>
<b>Key stage 1</b>	<ul style="list-style-type: none"><li>• <b>That animals, including humans, move, feed, grow, use their senses and reproduce.</b></li><li>• <b>To recognise and compare the main external parts of the bodies of humans.</b></li><li>• <b>That humans and animals can produce offspring, and they grow into adults.</b></li><li>• <b>To recognise similarities and differences between themselves and others.</b></li><li>• <b>To treat others with sensitivity.</b></li></ul>
<b>Key stage 2</b>	<ul style="list-style-type: none"><li>• <b>That nutrition, growth and reproduction are common life processes</b></li></ul>

- Key Stage 1 science includes pupils being taught to 'identify, name, draw and label the basic parts of the human body'.
- It is important that pupils are taught the names of the external genitalia, and know the differences between boys and girls. This is vital for safeguarding, so that a child has the language to describe the private parts of their body, and to seek help if they are abused.

# Where the Sex Education fits into Jigsaw themes

## **Relationships**

Families

Friendships

Love and Loss

Memories

Grief cycle

Safeguarding and keeping safe

Attraction

Assertiveness

Conflict

Own strengths and self-esteem

Cyber safety and social networking

Roles and responsibilities in families

Stereotypes

Communities

## **\*Changing Me**

Life cycles

\* How babies are made

\* My changing body

\* Puberty

Growing from young to old / Becoming a teenager

Assertiveness

Self-respect

Safeguarding

Family stereotypes

Self and body image

Attraction

Change / Accepting change

Looking ahead / Moving class/schools



# Legal implications

## Until September 2020

1. Schools **MUST** teach the Science curriculum which includes some 'sex education'
2. The DfE guidance 2000 requires schools publish their policy on RSE (Relationships and Sex Education)

Schools must comply with The Equalities Act 2010 page 13/14 of the DfE guidance 2019

Schools must not unlawfully discriminate against pupils because of their age, sex, race, disability, religion or belief, gender reassignment...or sexual orientation (protected characteristics)

We aim to teach RSE through our PSHE programme as well as through the science curriculum.

- Our PSHE programme is a whole school scheme of work known as 'Jigsaw'
- It is a comprehensive and completely original scheme of work from Nursery to year 6
- The PSHE (Personal, Social, and Health Education) scheme of work includes statutory Relationships and Health Education
- It includes detailed weekly lesson plan for all year groups, as well as teaching resources
- It is taught by the class teacher who knows their pupils and their needs
- The Jigsaw Approach is underpinned by mindfulness so beneficial for mental health
- The themes begin with whole school Assemblies

Jigsaw is has a different theme each half term. Each year group has the same theme but pupils will be covering content at a level appropriate to their age. The six themes are...

**Being Me in My World**

**Celebrating Difference**

**Dreams and Goals**

**Healthy Me**

**Relationships**

**Changing Me**

# Puberty and Human Reproduction in Jigsaw 3-11

## EYFS

### Growing Up

- How we have changed since we were babies

## Year 1

### My changing body

- Understanding that growing and changing is natural and happens to everybody at different rates

### Boys' and girls' bodies

- Appreciating the parts of the body that make us different and using the correct names for them

## Year 2

### The changing me

- Where am I on the journey from young to old, and what changes can I be proud of?

### Boys and girls

- Differences between boys and girls – how do we feel about them? Which parts of me are private?

## Year 3

- Body changes on the outside
- How our bodies need to change so they can make babies when we grow up –Inside body changes
- How our bodies need to change so they can make babies when we grow up – inside changes and how we feel about them

## Year 4

### Having a baby

- The choice to have a baby, the parts of men and women that make babies and – in simple terms – how this happens (simple (non-graphic) animations used – the Female Reproductive System)

### Girls and puberty

- How a girl's body changes so that she can have a baby when she's an adult – including menstruation (simple, non-graphic animations used – the Female Reproductive System)

## Year 5

Puberty for girls

Physical changes and feelings about them – importance of looking after yourself (simple, non-graphic animations used – the Female Reproductive System)

Puberty for boys

Developing understanding of changes for both sexes – reassurance and exploring feelings (simple, non-graphic animations used – the Male Reproductive System)

Conception

Understanding the place of sexual intercourse in a relationship and how it can lead to conception and the wonder of a new life (simple, non-graphic animations used – the Female and Male Reproductive Systems)



## **Year 6**

### Puberty

Consolidating understanding of physical and emotional changes and how they affect us (simple, non-graphic animations used – the Female and Male Reproductive Systems)

### Girl talk / boy talk

A chance to ask questions and reflect (single sex) (simple, non-graphic animations used – the Female and Male Reproductive Systems)

### Conception to birth

The story of pregnancy and birth simple, non-graphic (animations used – the Female and Male Reproductive Systems)

# Parents of Gorse Hall pupils...

Parents/carers have the right to withdraw their children from all or part of the Relationships and Sex Education provided at school except for those parts included in statutory National Curriculum Science, Relationships Education or Health Education (from September 2020).

Those parents/carers wishing to exercise this right are invited in to see the head teacher and/or RSE and PSHE lead who will explore any concerns and discuss any impact that withdrawal may have on the child. Once a child has been withdrawn they cannot take part in the RSE programme until the request for withdrawal has been removed. Materials are available to parents/carers who wish to supplement the school RSE programme or who wish to deliver RSE to their children at home.

Please contact school if you have any concerns or worries. We have detailed content overviews for each year group but ,due to Jigsaw copyright, these cannot be viewed online .